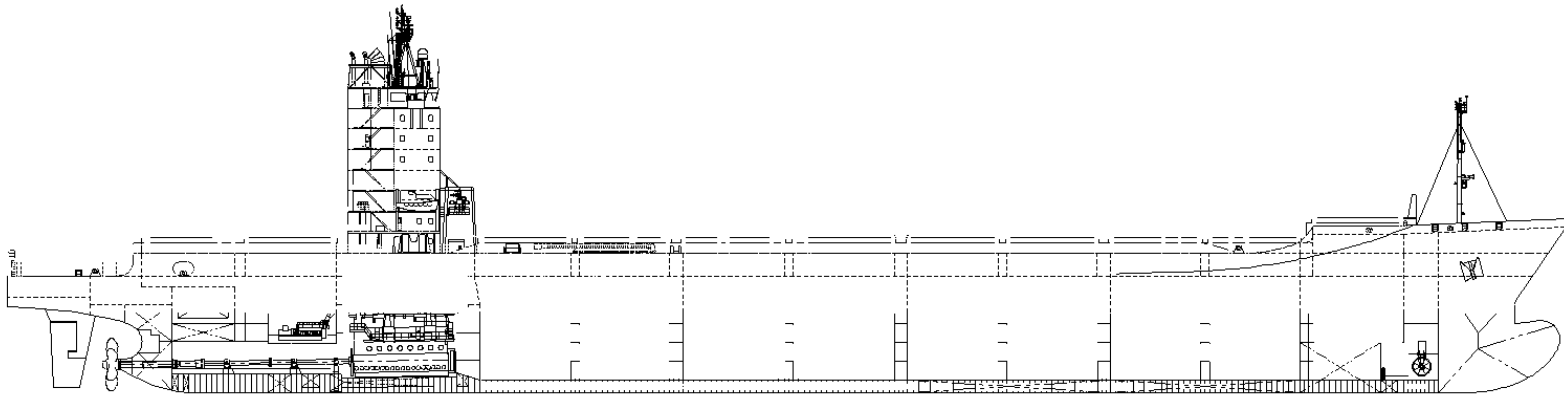


Philadelphia CV2600



Main Dimensions

Length overall	217.0 m
Length between perpendiculars	200.2 m
Breadth, molded	32.2 m
Depth to main deck at side	19.4 m
Design/scantling draft	11.0/12.5 m
Deadweight, design draft	29,400 t
Gross tonnage	32,575 t
Container capacity (typical stowage)	
20' in holds/on deck	4/0
40' in holds/on deck	253/0
40' high cube in holds/on deck	144/644
45' in holds/on deck	128/130
Alternate max stowage	
40' high cube in holds/on deck	182/774
45' in holds/on deck	128/208
53' on deck (no stowage in holds)	-/72
Reefer sockets in holds/on deck	40/260
Dangerous goods in holds and on deck	
Tank capacities	
HFO	3,700 m ³
MDO	180 m ³
LO (without circ tank)	60 m ³
Ballast Water (incl. heeling tanks)	11,600 m ³
Speed (90% MCR, 20% sea margin)	22.5 kts
Range	>10,000 nm

Class

American Bureau of Shipping
 + A1 CONTAINER CARRIER[®]
 + AMS + ACCU SH
 United States
 Flag of registry

Equipment for Cargo

Stack loads (TEU/FEU)	
in holds	120/220 t
on hatch no. 1	40/60 t
on hatches no. 2-11	60/90 t
on aft mooring deck (no 20' stowage)	-/70 t
Container cell guides in holds for 40' and 45'	

Ship's Equipment

Semi-balanced rudder, welded type	
Bow thruster	1 x 1,300 kW
2 combined anchor/mooring winches	
5 mooring winches	
Lifeboats, enclosed type	2 x 32 pers
Service crane, monorail type	swl 8 t / outreach 6 m

Machinery

Main engine, 2-stroke	28,880 kW MCR
T/C, reversible	at 104 rpm
Fixed pitch propeller, 6 bladed, RH	7.22 m dia
Auxiliary steam plant	
combined exhaust gas	3.2 t/h
oil fired boiler	3.2 t/h
Incinerator	500,000 kcal/h
Diesel generators, electrical output	2 x 1290 kW
60 Hz, 0.8 PF at 900 rpm	2 x 1450 kW
Voltages used for main consumers	440 V at 60 Hz
Integrated automation system	
Ballast system	2 line type
Anti-heeling system	± 0.5 degrees
Water fire fighting system incl. fixed local fire fighting system	
CO ₂ fire fighting system	

Accommodation

Crew	26 pers
Berths provided	28 pers

Building the Future