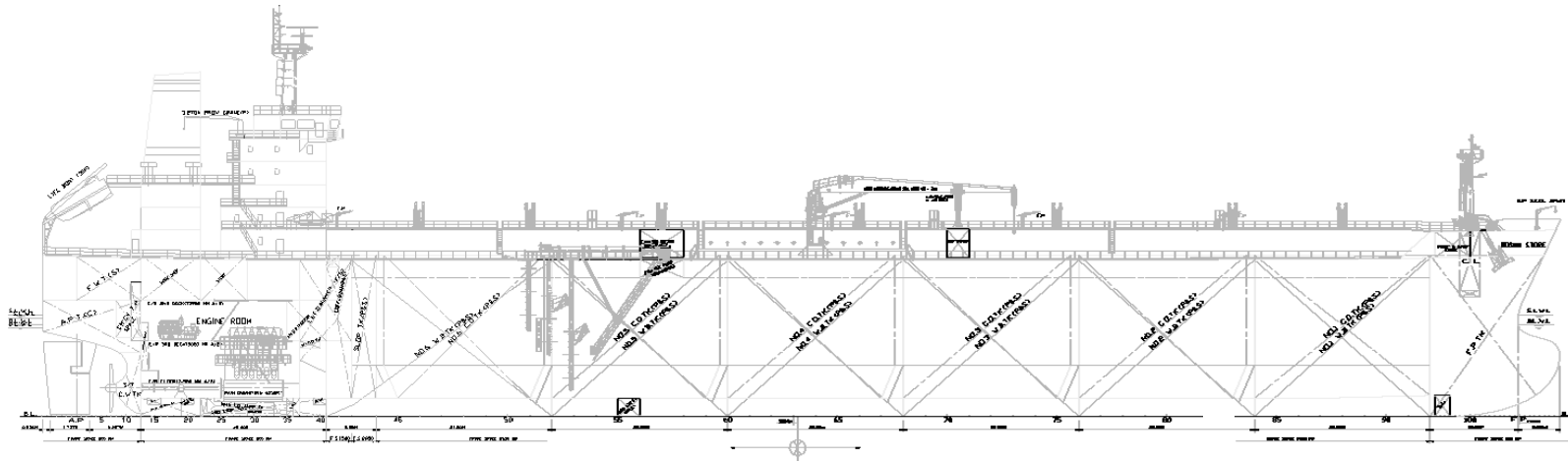


Veteran Class MT46



Main Dimensions

Length overall	abt. 183.2 m
Length between perpendiculars	174.0 m
Breadth, molded	32.2 m
Depth, at side	18.8 m
Draft, design / scantling	abt. 11.0 / 12.2 m
Deadweight, at 11.0 / 12.2 m draft	abt. 40,700 / 45,800 t
Gross tonnage	abt. 29,200 t
Tank capacity	
Cargo	52,650 m ³
Slops	1,150 m ³
Cargo & slops	53,800 m ³
Ballast	22,500 m ³
HFO	1,600 m ³
MDO	170 m ³
Freshwater	250 m ³
Potable water	50 m ³
Lube oil	100 m ³
Speed, at 11.0 m, 85% MCR, 15% SM	abt. 14.6 kn
Radius of action ISO cond., 11.0 m, 15 kn	14,000 nm

Class

American Bureau of Shipping	+A1(E), Oil/Chemical Carrier, ESP, Ship Type 2, +AMS, +ACCU, SH, SHCM, COW, UWILD
Flag of Registry	United States of America

Equipment for Cargo

Cargo tanks	6 pairs & slops
Hyd. submerged pumps	12 x 600 m ³ /h, 125 m TH
Unloading/loading capacity	3,600 m ³ /h

Ship's Equipment

Semi-balanced spade rudder	
2 combined anchor windlass / mooring winches	
4 mooring winches	
Lifeboat (freefall)	1 x 30 pers.
Stores / provisions crane (port)	1 x 3.2 t SWL
Cargo hose handling crane	1 x 10 t SWL

Machinery

Main engine	MAN-B&W 6S50MC, 2-stroke, 6-cylinder
D.M.C.R	11, 640 BHP (8,680 kW) at 127.0 RPM
N.C.R.	9,894 BHP (7,380 kW) at 123.9 RPM
Propeller	1 x Fixed pitch, 4-bladed
Diameter x pitch (0.7R)	5.80 x 4.12 m
Heat generating plant (steam)	
Auxiliary system	1 x 18 t/h
Exhaust gas (90% MCR, ISO)	1 x 1 t/h
Diesel generator aggregates	3 x 700 kW at 720 RPM
Voltagages for main consumers	440 V and 220 V, 60 Hz
Integrated automation system	
Ballast system	2 lines, 2 x 750 m ³ /h
Water firefighting system	
CO ₂ firefighting system	
Foam water spray system	

Accommodation

Complement, including pilot	28 + 6
-----------------------------	--------

Building the Future



part of Aker